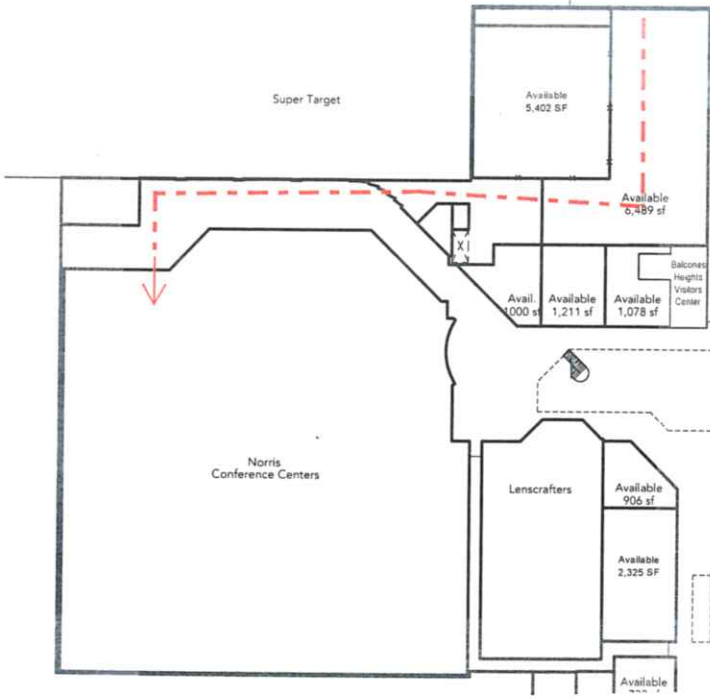


Interior path to the Norris Conference Center



**Loading and Unloading Time Limits**

Trucks-45 minutes

Vans-30 minutes

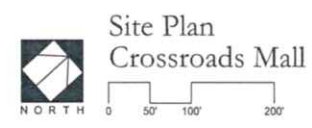
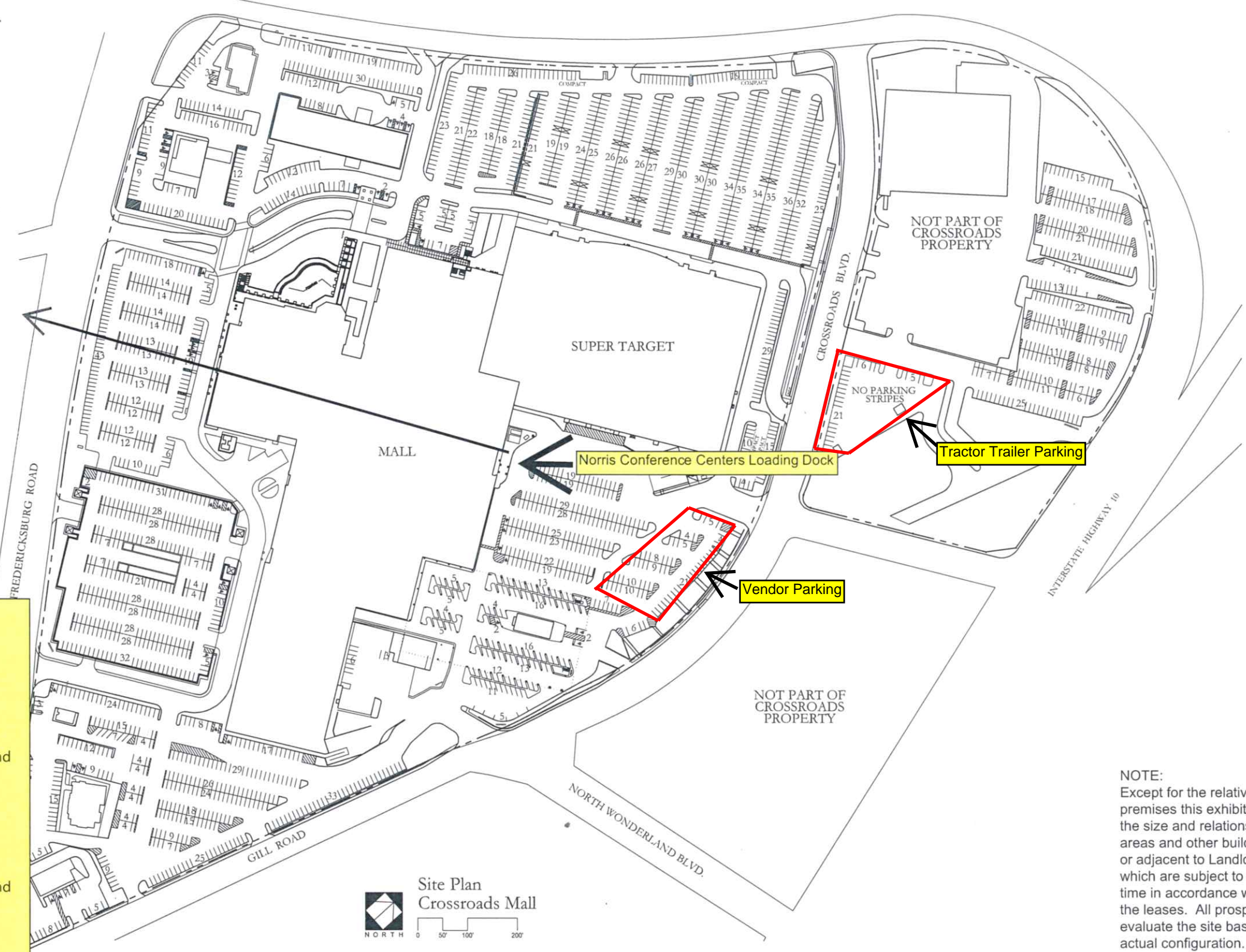
Cars-30 minutes

**Directions to Loading Dock**

From Loop 410: Exit Fredericksburg Road from Loop 410. The mall is located on the southeast corner of Loop 410 and Fredericksburg Road. Turn Left at Hillcrest onto the Mall Property. Drive past Super Target. Continue to the backside of Super Target. Loading Dock is in the corner of the backside of Super Target and Crossroads Mall.

From I-10 W/Hwy 87 N: Exit Crossroads Blvd. Turn left on Crossroads Blvd. to access the mall. Turn right on Gill Rd. Turn left into parking lot. Loading Dock is in the corner of the backside of Super Target and Crossroads Mall.

From I-10 E/Hwy 87 S: Exit Vance Jackson, then u-turn back to Crossroads Blvd (the Crossroads Blvd exit is currently closed due to TxDot construction). Turn left on Crossroads Blvd. to access the mall. Turn right on Gill Rd. Turn left into parking lot. Loading Dock is in the corner of the backside of Super Target and Crossroads Mall.



**Crossroads Mall**  
San Antonio, Texas  
Trammell Crow Company

**NOTE:**  
Except for the relative location of the premises this exhibit is only illustrative of the size and relationship of the common areas and other buildings and facilities in or adjacent to Landlord's building all of which are subject to change from time to time in accordance with the provisions of the leases. All prospective tenants should evaluate the site based on its current actual configuration.

© Beuty & Partners Architects, Inc.  
110 Broadway  
Suite 600  
San Antonio, Texas 78205  
tel: 210.212.8022  
fax: 210.212.8018  
www.beutypartners.com

**BEAUTY & PARTNERS ARCHITECTS**